

# Easy and secure control of digital displays and content

## AppTec Digital Signage & Kiosk Package



Display digital content such as product advertising, pricing information or even digital door signs easily and securely with AppTec Digital Signage Software. AppTec Digital Signage & Kiosk Package lets you to control devices (digital displays) and content (video and audio) with absolute reliability.

### Advertise and inform in a modern way:

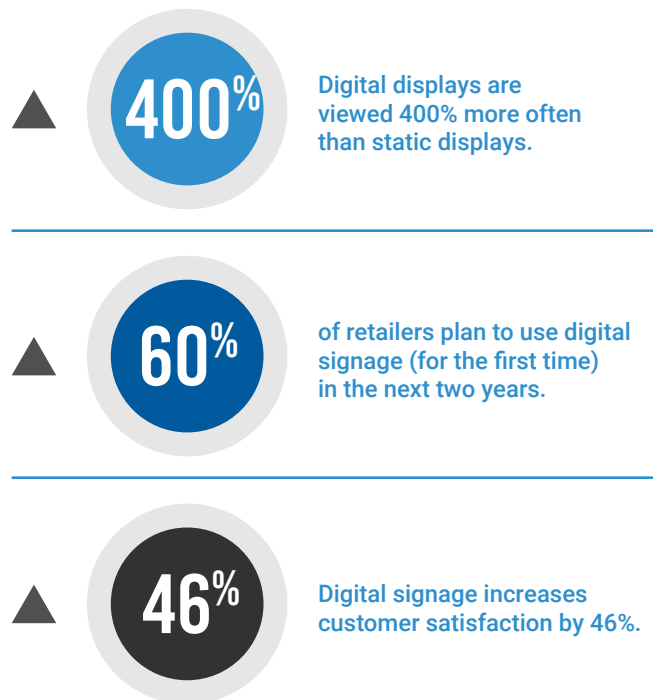
Media content of all kinds – from advertising messages to traffic information – can be presented professionally and attractively on digital displays. Digital signage systems play out video as well as audio content and thus represent a contemporary form of advertising with high attention potential.

With AppTec Digital Signage Software, digital advertising content and information can be realized easily and securely. Manage all devices in use and manage content with the integrated media player.

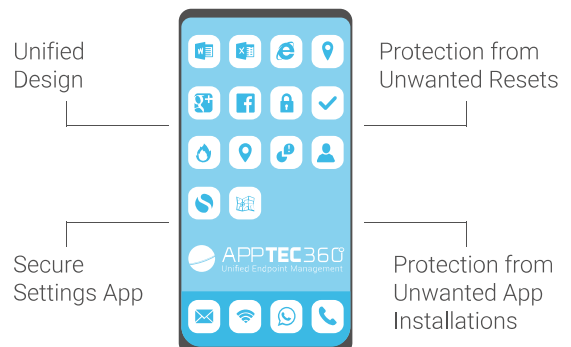
From the user's point of view, the relevant applications are usually reduced to a single app. Access to additional apps is in most cases not necessary and – for security reasons – often not desired. Therefore, use the single kiosk mode to reduce the digital signage hardware (the digital display) to the operation of a single app.

Or, limit mobile devices to a specific work mode running only a few applications (multi-kiosk mode) if your organization's day-to-day business requires it.

### Good reasons for the AppTec Digital Signage & Kiosk Package:



(Source: Webinare Care, Digital Signage Statistics)



## Scope of services and benefits:

**Secure working environment:** on iOS and Android devices with predefined apps.

**Single-app or multi-app kiosk mode:** a reduced work environment with only one or a few apps as the preset app environment, also ideal in areas such as incoming goods or clinical and nursing services.

**Custom Launcher:** Define a uniform design on all of your employees' Android devices. Use the AppTec Android settings app to display only the custom settings with limited features.

### Remotely install and uninstall apps

**Disable** softkeys and physical buttons, WiFi and Bluetooth, as well as volume and brightness controls.

**Hide** app icons and toolbars.

**Kiosk mode as default mode** even when device is restarted.

## About AppTec:

Founded in Basel in 2011, AppTec has now won over 6,400 customers with its simplified and accessible mobile-first solution. AppTec is a Leader in the Crisp Vendor Universe Quadrant and has received several awards as the best mobile device management solution.

Want to learn more? We would be happy to show the possibilities of the AppTec Digital Signage & Kiosk Package in a short online demo. Just send us an email at [sales@apptec360.com](mailto:sales@apptec360.com)

For more information, please visit [www.apptec360.com](http://www.apptec360.com)

## Customers:

